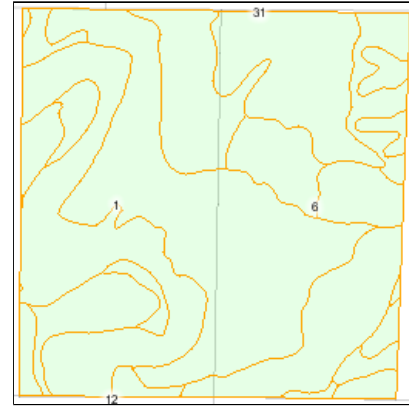
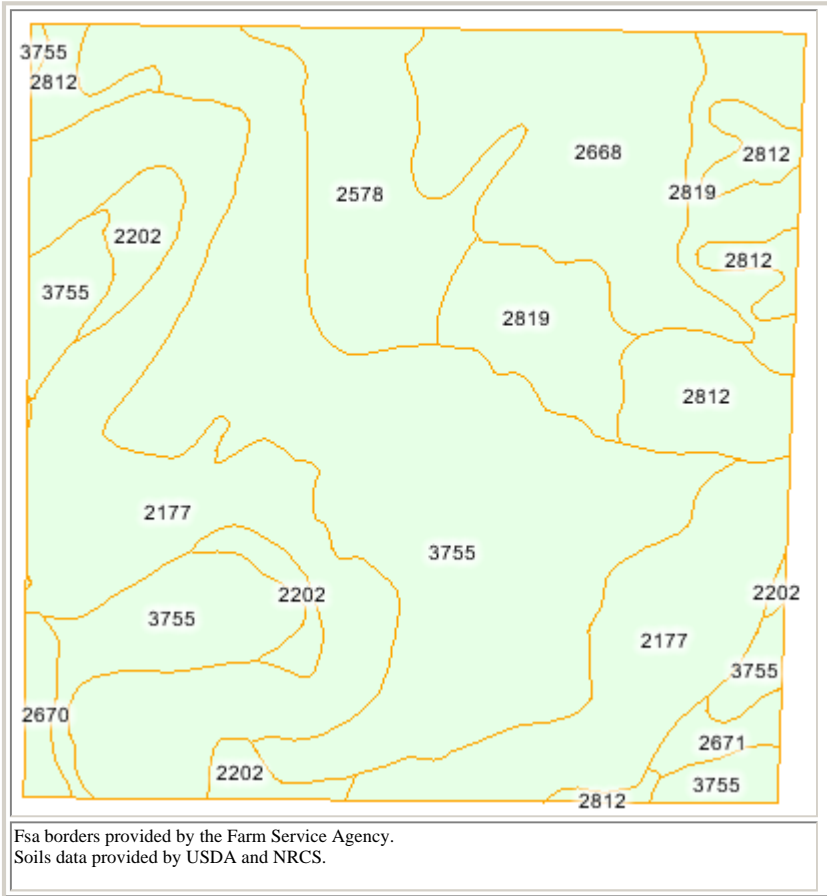


Soils Map



State: **KS**
 County: **Norton**
 Location: **1-1S-25W**
 Township: **Center-District 1**
 Acres: **629.0**



© 2006 AgriData, Inc.

Code	Soil Description	Acres	Percent of field	Non-Irr Class	Irr Class	Grain sorghum	Warm season grasses	Winter wheat
3755	Hord silt loam, rarely flooded	220.2	35.0%	IIC	I	34.6	0.7	21.6
2177	McCook silt loam, occasionally flooded	171.5	27.3%	IIW	IIW	30.1	0.7	19.3
2668	Holdrege silt loam, 1 to 3 percent slopes	68.7	10.9%	IIE	IIE	27.1	0.6	18.7
2819	Uly silt loam, 6 to 11 percent slopes	49.2	7.8%	IVE	IVE	29.9	0.6	17.4
2578	Coly and Uly silt loams, 6 to 10 percent slopes, eroded	46.7	7.4%	IVE	IVE	24.4	0.6	13.7
2812	Uly complex, 10 to 20 percent slopes	39.7	6.3%	VIe		0.0	0.6	12.0
2202	Munjoy sandy loam, occasionally flooded	20.7	3.3%	IIIW		32.9	0.8	19.1
2670	Holdrege silt loam, 3 to 7 percent slopes	6.3	1.0%	IIIe	IIIe	33.7	0.6	19.6
2671	Holdrege silt loam, 3 to 7 percent slopes, eroded	6.0	1.0%	IIIe	IIIe	30.7	0.6	17.9
Weighted Average						29.1	0.7	19.0